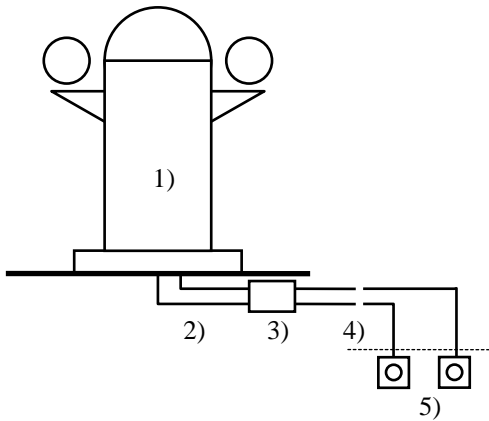
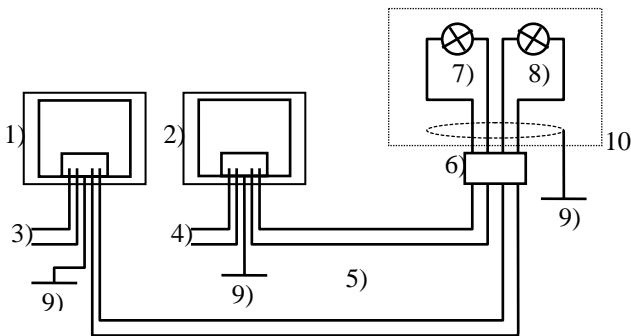


**Illumination Schematic**



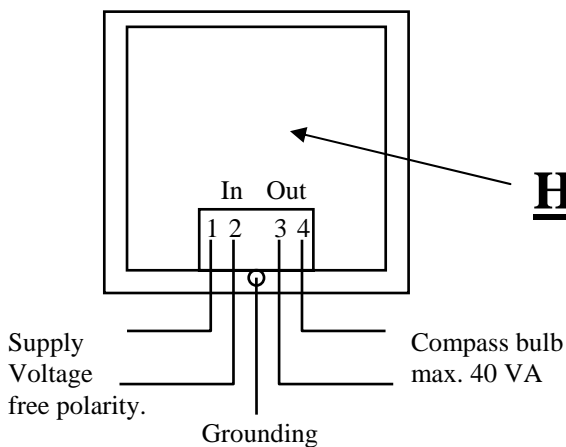
- 1) Magnetic compass binnacle on compass deck
- 2) Cable for main and emergency illumination.  
Length 1 m, included in the delivery
- 3) Terminal box (yard supply) below wheelhouse roof.  
Allows to separate cables for removal of compass binnacle
- 4) Cables inside wheelhouse to control console (yard supply), for main and emergency illumination
- 5) Dimmers for main and emergency illumination (optional)

**Wiring**

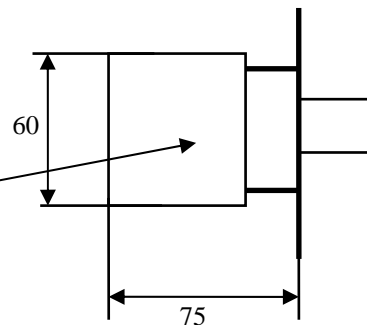


- 1) Main dimmer (option) seen from rear
- 2) Emergency dimmer (option) seen from rear
- 3) Main supply voltage (230 VAC)
- 4) Emergency supply voltage (24 VDC, 115 VAC or 230 VAC)
- 5) Cable between dimmer and terminal box (yard supply)
- 6) Terminal box (yard supply), inside wheelhouse
- 7) Main light bulb, max 40 VA
- 8) Emergency light bulb, max. 40 VA
- 9) Grounding
- 10) Parts inside compass binnacle.

**Dimensions, seen from**



**Dimensions, side view**



**Hot !**