



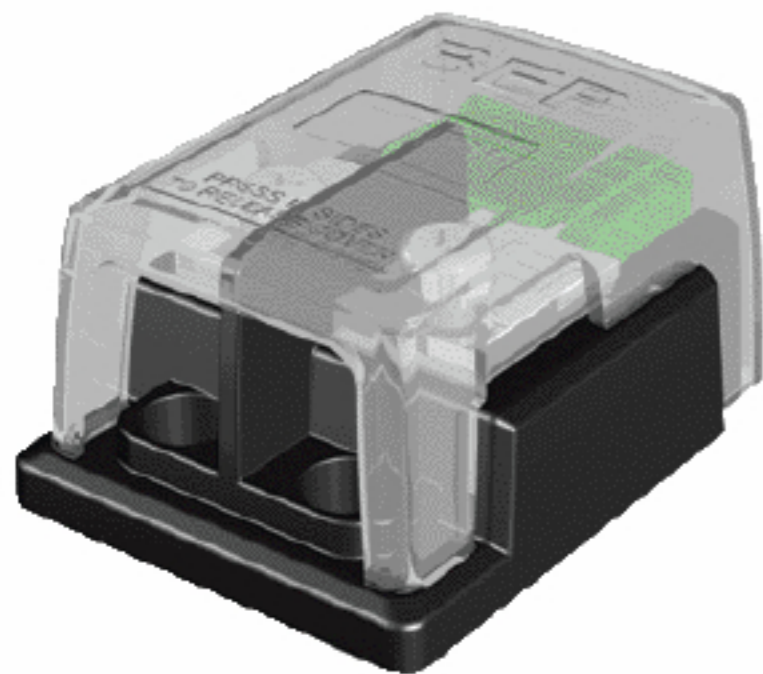
Maxi-Blade Fuses

Fuses available 30-80 A

Interrupt capacity: 1000 A DC;

Maximum voltage: 32 V DC

| Maxi-Blade Fuses | |
|------------------|------------|
| Part No. | Rating (A) |
| BFHD-30A | 30 |
| BFHD-40A | 40 |
| BFHD-50A | 50 |
| BFHD-60A | 60 |
| BFHD-70A | 70 |
| BFHD-80A | 80 |



Maxi Fuse Holder

702-MFH Maxi Fuse Holder

An economical way of fusing heavy loads 30-80 A. Ideal for battery charger outputs or mains feeds. 6 mm (1/4") studs accept ring terminals and cables up to 25 mm² (4 gauge). Fuse is clamped between tinned brass clamps for positive connection. Covers enclose exposed terminals to meet ABYC standards. 71 × 53 × 36 mm (2.8 × 2 × 1.42 in)